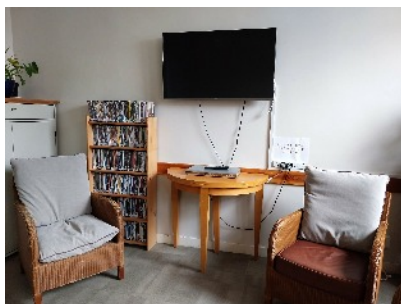
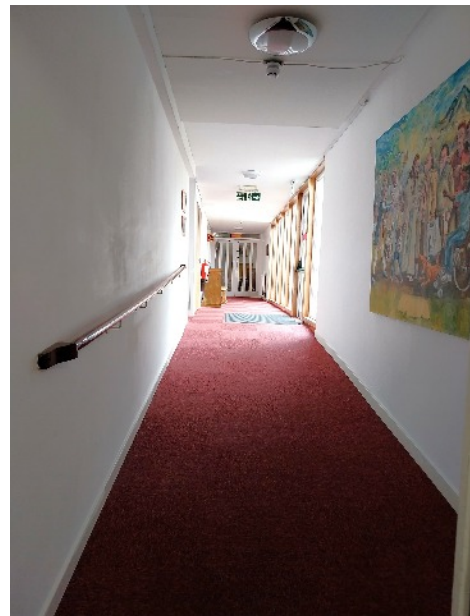




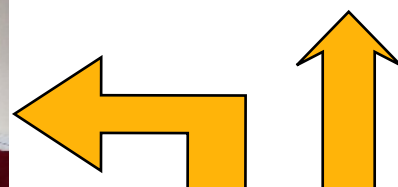
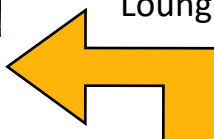
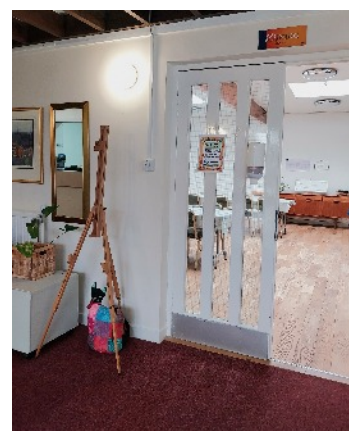
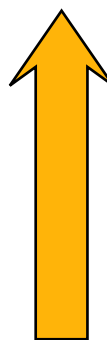
A mobile hoist is available for use in any of the rooms, if required.



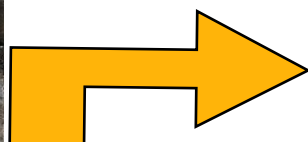
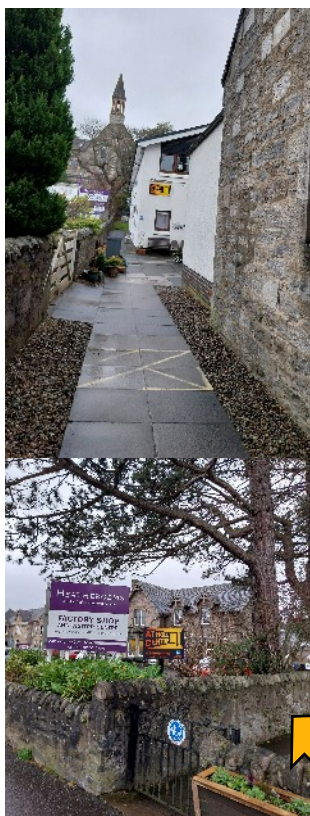
Access to the Changing Places Toilet, for the use of residents and non-residents, is on the left of the wide, gently sloping corridor leading from reception.



Leave the Reception area via the safety door and turn left to enter Kathleen's Lounge.



You are now in the Reception area and off this is the dining room.



The main door is opened using the press pad.

The Atholl Centre is a charitable organisation offering residential accommodation and other easily accessible facilities. Approach it on the level footpath from Atholl Road pavement.



**You have arrived at your destination
PH16 5BX**



Ground Floor Plan showing rooms 1-6

ES : en suite

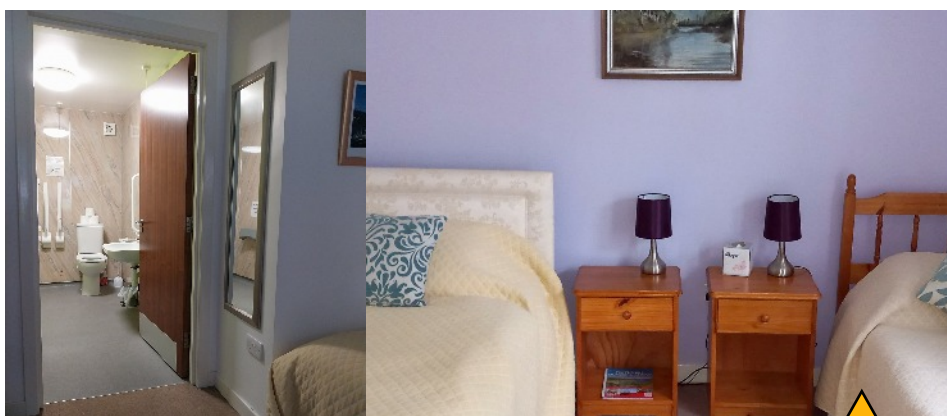
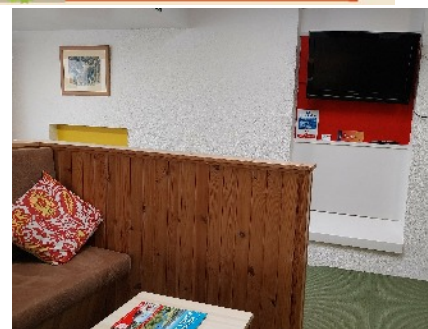


The **Garden Chalet** sleeps 7 in two twin rooms and a family room each with en suite wet rooms.

There is a dining area and a comfortable sitting area with an adjustable position flat screen TV.



The kitchen has a fully accessible kitchen with a rise-and-fall hob to enable you to cook either standing or in a wheelchair, and sink with lever taps; mid height fridge for easy access; pull down insert for storage cupboard; mobile set of drawers underneath the shelves and pull-out work top beneath.



At the end of the corridor is the self-catering unit called the '**Garden Chalet**'. It can also be entered via its own outside door at the back of the building.

Residents garden sitting area



On the ground floor, the Centre has three bedrooms with en suite wet rooms available for B&B. (Rooms 4, 5 and 6). Approach these from the passageway on the left of the main corridor. The pictures are of room 6.

